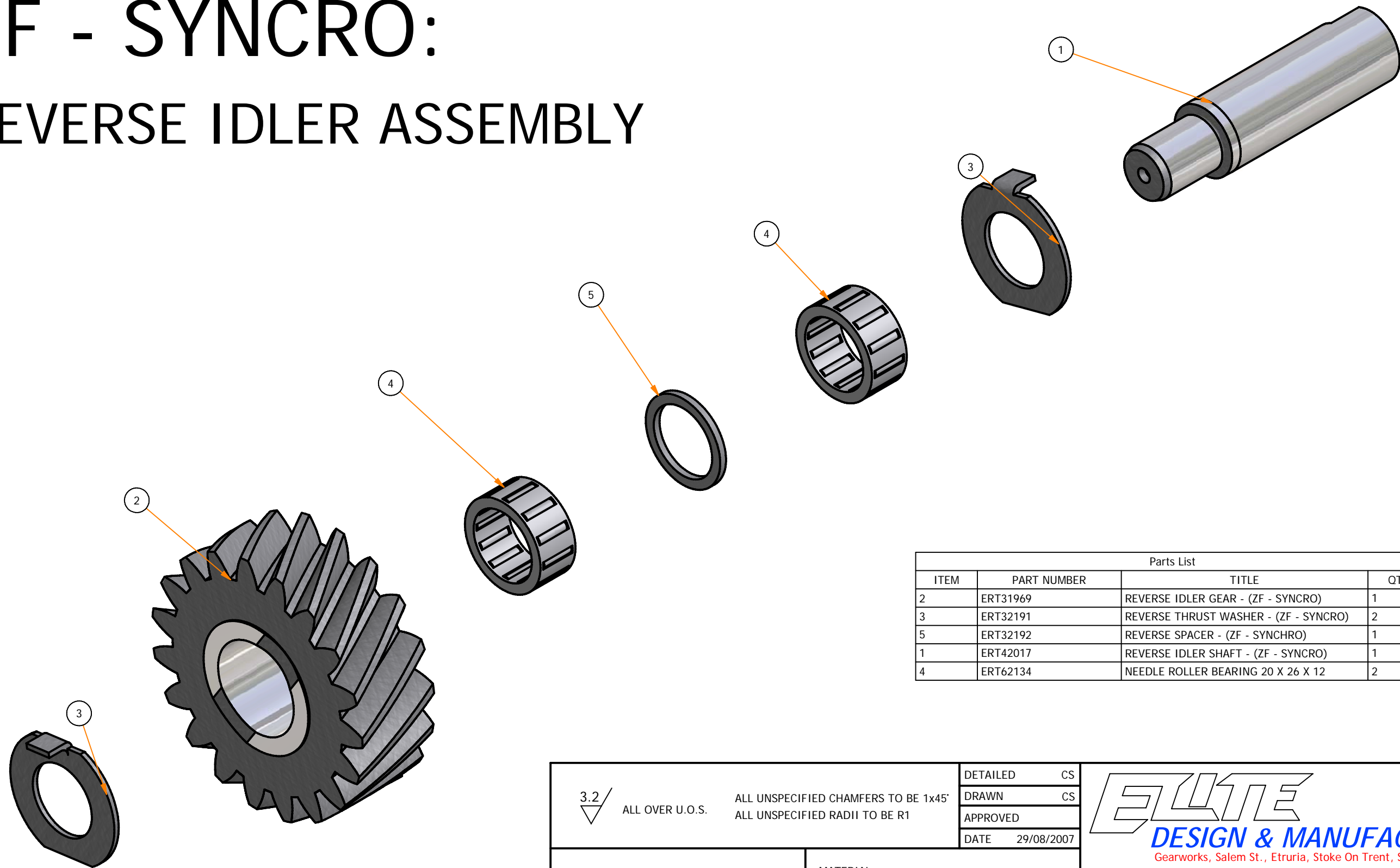


# ZF - SYNCRO: REVERSE IDLER ASSEMBLY



Parts List			
ITEM	PART NUMBER	TITLE	QTY
2	ERT31969	REVERSE IDLER GEAR - (ZF - SYNCRO)	1
3	ERT32191	REVERSE THRUST WASHER - (ZF - SYNCRO)	2
5	ERT32192	REVERSE SPACER - (ZF - SYNCRO)	1
1	ERT42017	REVERSE IDLER SHAFT - (ZF - SYNCRO)	1
4	ERT62134	NEEDLE ROLLER BEARING 20 X 26 X 12	2

<p>3.2/ ALL OVER U.O.S. ALL UNSPECIFIED CHAMFERS TO BE 1x45° ALL UNSPECIFIED RADII TO BE R1</p>	<p>DETAILED CS</p>	<p><b>ELITE</b> <b>DESIGN &amp; MANUFACTURING</b> Gearworks, Salem St., Etruria, Stoke On Trent, ST1 5PR. Tel 01782 280136, Fax 01782 269913, Email <a href="mailto:contact@eliteracingtransmissions.com">contact@eliteracingtransmissions.com</a>.</p>	
	<p>DRAWN CS</p>		
	<p>APPROVED</p>		
	<p>DATE 29/08/2007</p>		
<p>UNLESS OTHERWISE STATED</p> <p>TOLERANCES ANGULAR = +/- 0° 00' 0" DIMENSIONS = +/- 0.1MM = +/- 0.004"</p> <p>SURFACE FINISH IN Um 3.2</p>	<p>MATERIAL</p>	<p>TITLE <b>REVERSE IDLER</b></p>	
	<p>SURFACE HARDNESS MIN Rc MAX Rc</p> <p>CORE STRENGTH N/SQ.mm.</p>		
<p>REMOVE ALL SHARP EDGES AND BURRS</p>	<p>DO NOT SCALE</p>	<p>DRG. No. <b>ERT92945</b></p>	<p>Issue</p>